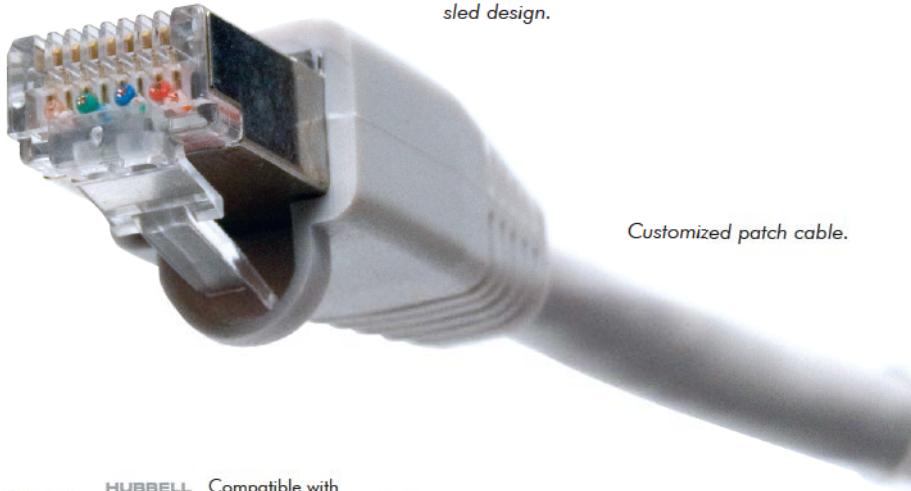


HUBBELL
NextSpeed

**Shielded Patch Cords,
10GbE/Category 6**

Two-piece conductor sled design.



Customized patch cable.

Hlabel HUBBELL Compatible with Hubbell Labeling System - see page M8.

HUBBELL
Advantage

- ANEXT Component Performance.
- PoE and PoE+ ready.
- 100% Factory Tested.
- RoHS Compliant.
- Inner Core Design Extends Patch Cord Life Span Reducing Waste.

Features/Benefits

- Zero Bit-Error channel performance.
- Controlled crosstalk.
- Backward compatible to Cat. 5e, 5.

Specifications

Mechanical

- ◆ Cable to plug tensile strength: 20+ lbs.

Material

- ◆ Plug body: Polycarbonate UL 94V-0.
- ◆ Plug boot: PVC.

NEXTSPEED® Shielded Patch Cords, 10GbE/Category 6



The PS6 patch cords are constructed with specially designed patch cable and a cross pair separator delivering one of the industry's highest performing patch cords. The PS6 plug incorporates a two-piece conductor sled design to optimize performance and control NEXT by separating and staggering pairs. This unique design provides consistent contact-to-conductor alignment. Every PS6 patch cord is 100% performance tested, to assure high quality and reliability before it leaves the factory.

Length	Catalog No.	Length	Catalog No.
3'	PS603XX ✓10G	15'	PS615XX ✓10G
5'	PS605XX ✓10G	20'	PS620XX ✓10G
7'	PS607XX ✓10G	25'	PS625XX ✓10G
10'	PS610XX ✓10G		

XX=Color; B=Blue, GY=Gray



SPEEDGAIN® Shielded Patch Cords, Category 5e



The PS5e patch cords are constructed with custom designed patch cable delivering a high performing patch cords. Every PS5e patch cord is 100% performance tested, to assure high quality and reliability before it leaves the factory.

Length	Catalog No.	Length	Catalog No.
3'	PS5E03XX	15'	PS5E15XX
5'	PS5E05XX	20'	PS5E20XX
7'	PS5E07XX	25'	PS5E25XX
10'	PS5E10XX		

XX=Color; B=Blue, GY=Gray

